

# how to build a wax figure

## relaxed performance pack

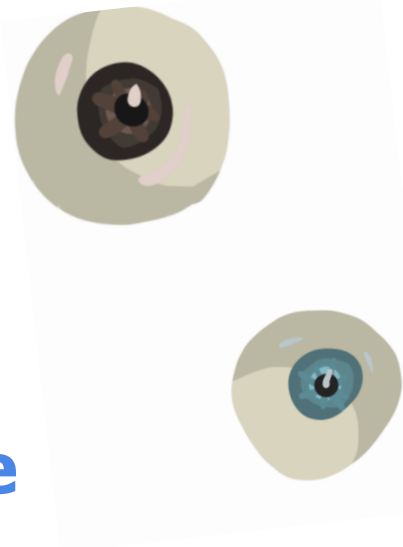
### Information For Audience + Carers

November Theatre and Assembly are very excited to welcome you to our relaxed performance of *how to build a wax figure*.

During our relaxed performances we welcome a more relaxed approach inside the performance space to allow everyone to enjoy the show in their own way. This means people can follow their needs to move in and out of Studio 4, make involuntary noise, or take a bit more time to adjust to their surroundings.

There's information in this pack about the story, the performance space, and access, which you might find helpful before seeing the show.

We hope you enjoy *how to build a wax figure*.



## Access to the Venue

Studio 4 is located in Assembly George Square, EH8 9LH. Studio 4 is located on the ground floor to the rear of the studios.



It is well signposted and there are plenty of staff to help guide patrons to the studio.



It is accessible from street level on George Square, via the glass box down some stairs.



The theatre is also accessible by lift at the main entrance from George Square.

If approaching from Buccleuch Place the studio is located directly next to the glass automatic doors as you enter.



## Parking

There is no parking directly at the venue. On Buccleuch Place there is disabled parking that is very close to the studio itself and has accessible access straight from street level.

## Additional Information

If the fire alarms are sounded they ring in the corridors outside the studio not directly in the performance space itself.

In the event of an evacuation a member of the Assembly team team would come into the performance space, calmly stop the show, and show you out of the building. Ushers will be there to help and make sure you are safe.

If you would like to speak to someone about access ahead of your trip to assembly, you can email Chris: [chrisburkitt@assemblyfestival.com](mailto:chrisburkitt@assemblyfestival.com)

You can also mention it to the box office, when you book your ticket.

## Show Notes

- *how to build a wax figure* is 50 minutes long, with a 5 minute pre-show to allow everyone time to settle.
- *How to build a wax figure* is a play set in proscenium. That means everyone sits in chairs facing the stage.
- There's no right or wrong way to enjoy *how to build a wax figure*! You can move around, make noise, and come in and out. We do ask that no one comes into the main performance area (onto the stage) so that everyone can stay safe during the show.



- The actors in the play communicate mainly with words, although sometimes they will communicate with facial expressions and gestures.
- At any time you can step away and take a break. Ushers will be there to help you.
- Ushers are there to help. They will show you where the toilets are, where the quiet spaces in the venue are, and to make you feel safe. You can speak to them before, during, or after the performance.

## Quiet Spaces

There are two quiet places to go to if you need a time out. There are booths in the corridor leading up to the studio which are removed from the hustle and bustle, and an usher can lead you there.



There is also a quiet area with sofas at the rear of the club bar, which an usher can take you to.



## Who You Will See

This is Emily. She is the operator for the show. She sits behind the audience and makes all of the lights and sounds happen.



Assembly Ushers. Your Assembly usher will be wearing a **red Assembly** shirt and a **red Assembly lanyard**. They are who to talk to if you need any help or information.

## The Performers



This is Nell.  
She is playing Bea



This is Liv.  
She is playing Margot.



This is Alice.  
She is playing Dana.



## ABOUT THE PERFORMANCE

*how to build a wax figure* is a show about three women, and their relationships with each other and their work.

The play starts in the present day

The play starts in the present day, at the Wellcome Collection in London. This is a museum, and Bea, our main character is there to give a lecture about Ocularistry. Ocularistry is the process of making fake eyes.

Bea is very nervous. She is practising her lecture in a storage room in the building.

Dana walks in and surprises Bea.

Bea starts to tell Dana about her job, and that she's nervous. She also starts to talk about Margot. Margot is a wax figure sculptor who used to be Bea's mentor. As she talks about Margot, Margot appears onstage. Bea is remembering Margot - she's not actually there.

The rest of the play happens between the present day and Bea's memories. When Bea is in the present, she is talking to Dana about her job and her relationship with Margot. When she is remembering, she talks to Margot, and the stage transforms into Margot's artist studio.

The performers feel lots of different feelings during the show. Sometimes they are happy, sometimes they are frustrated, sometimes they are sad, and sometimes they are angry. There is also kissing between Bea and Margot.

Everyone is okay in the end, even though they don't always feel very nice.



## The Set

This is what the set looks like:





There are lots of strange props in this play. They include:

*A clay head*

*A clay bust*

*Fake Eyes made of clay*

*Tools for carving clay*

Here are some images of those props:



## **Before the show**

The performers will come onto the stage and introduce themselves to you and tell you who they are playing, and the ages they are portraying.

## **How the show will be adjusted**

We will be adjusting some of the sensory elements of the show to make them less intense.

The house lights (lights above the audience) will be left on for the performance.

We have removed all flashing lights.

All the sound effects will be reduced, so they're less loud and sudden.



**We understand that not all the adjustments we make will suit everyone's needs. We hope this pack will help you make an informed decision about whether the show is a good fit for you. We would also love feedback on other adjustments that would be appreciated in the future.**



**Thank you for taking the time to read.**

**We hope you enjoy the show!**

**From,  
November Theatre**